



# Stainless Steel Trim Tabs DUAL ACTUATOR

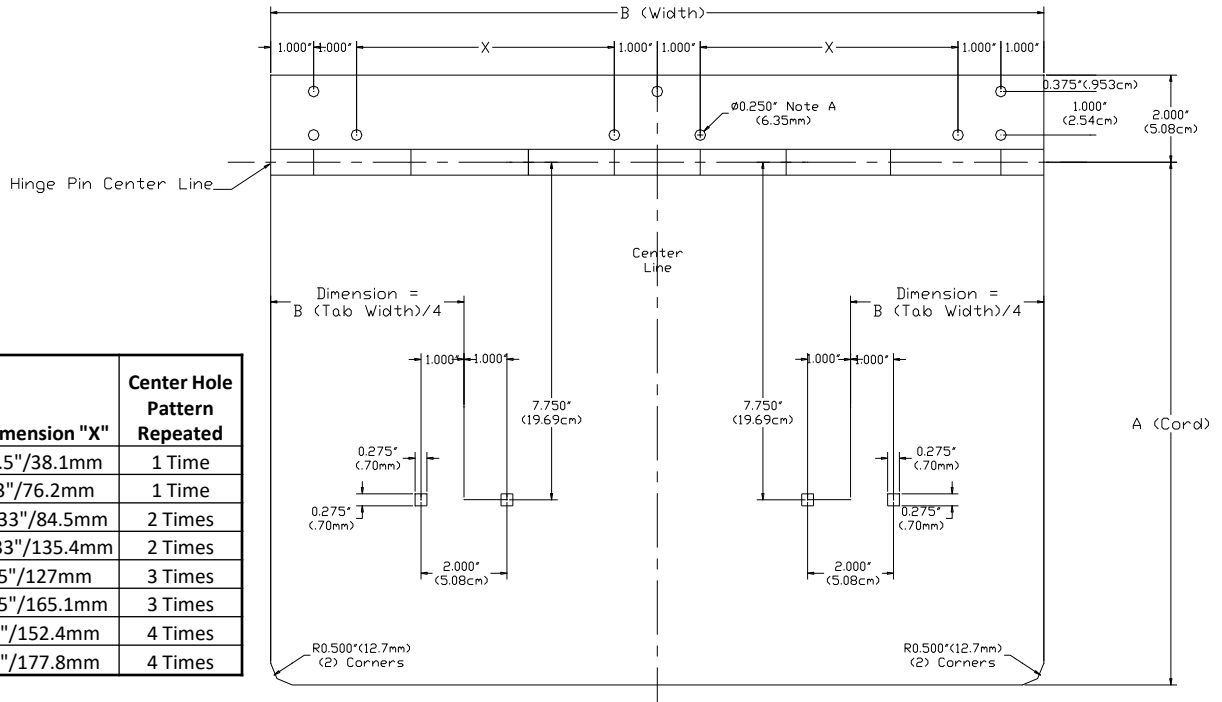


The Lectrotab dual actuator mounted stainless steel trim tabs are designed to double the pushing force compared to single actuator tabs. All stainless steel tabs are fabricated with a continuous rolled and pinned hinge. This design eliminates the need for welding. The tabs are made of corrosion resistant 12 gauge, 304 stainless steel and are available in standard finish (as shown), or black powder coated stainless steel. Standard tabs are available in 12" (30cm) chord lengths and in widths between 12" (30cm) and 48" (122cm). See specification chart for dimensional details. All tabs exceeding a 24" (61cm) width feature a 90 degree bent up trailing edge for additional strength. Edges can be turned up or down, made straight or tapered, and reinforced in any way. For galvanic protection, pre-installed zinc anodes are also available.

## FEATURES

- Trim tabs designed for 2 actuators per tab mounting
- Doubles the pushing force compared to single actuator tabs (2000 lbs per tab)
- Strong, corrosion resistant 12 gauge, 304 stainless steel
- Continuous rolled and pinned hinge provides added strength and eliminates welding
- Standard chord lengths available in 12" (30cm) and widths from 12" (30cm) to 48" (122cm)
- Custom chord lengths and widths are also available
- Black powder coated finish available
- Zinc anodes may be installed for additional galvanic corrosion resistance
- Bent trailing edge standard for tabs exceeding 24" width
- Includes carriage bolts and nuts for actuator mounting to tab

# DUAL ACTUATOR STAINLESS STEEL TAB DIMENSIONS



Tab Width "B"	Dimension "X"	Center Hole Pattern Repeated
9"/23cm	1.5"/38.1mm	1 Time
12"/30cm	3"/76.2mm	1 Time
18"/46cm	3.33"/84.5mm	2 Times
24"/61cm	5.33"/135.4mm	2 Times
30"/76cm	5"/127mm	3 Times
36"/91cm	6.5"/165.1mm	3 Times
42"/107cm	6"/152.4mm	4 Times
48"/122cm	7"/177.8mm	4 Times

## DUAL ACTUATOR TRIM TAB MODEL NUMBER IDENTIFICATION

T                      12                      X                      36                      -                      1306

T = Stainless Steel  
12 gauge

1st Number (A) =  
Tab Chord Length (inches)

2nd Number (B) =  
Tab Width Across  
Transom (inches)

1306 = 2 Actuators Per Tab  
8837-M = 2 Actuators w/center  
channel support, all edges bent  
90° up

## SPECIFICATIONS

Model Number	Stainless Steel (Gauge)	Tab Size		Typical Boat Length	
		Inches	cm	Feet	Meters
T12x24-1306	12	12x24	30x61	28'-48'	8.5m-14.5m
T12x30-1306	12	12x30	30x76	30'-55'	9.0m-16.5m
T12x36-1306	12	12x36	30x91	34'-60'	10.0m-18.0m
T12x42-1306	12	12x42	30x107	50'-70'	15.0m-21.0m
T12x48-1305	12	12x48	30x122	60' +	18.0m +
T18x12-8837-M	12 w/center channel all edges bent up	18x12	46x30	28'-48'	8.5m-14.5m