



Stainless Steel Trim Tabs

HEAVY DUTY



Lectrotab heavy duty stainless steel trim tabs incorporate a 90° taper bent edge to provide unmatched strength and reliability. All stainless steel tabs are fabricated with a continuous rolled and pinned hinge. This design eliminates the need for welding. The tabs are made of corrosion resistant 12 gauge, 304 stainless steel and are available in standard finish (as shown) or black powder coated stainless steel. Heavy duty tabs are available in 9" (23cm) and 12" (30cm) chord lengths (chord is the length from the transom to the tab trailing edge) and in widths between 9" (23cm) and 48" (122cm). See specification chart for dimensional details. All tabs exceeding a 24" (61cm) width feature a 90 degree bent up trailing edge for additional strength. For galvanic protection, pre-installed zinc anodes are also available.

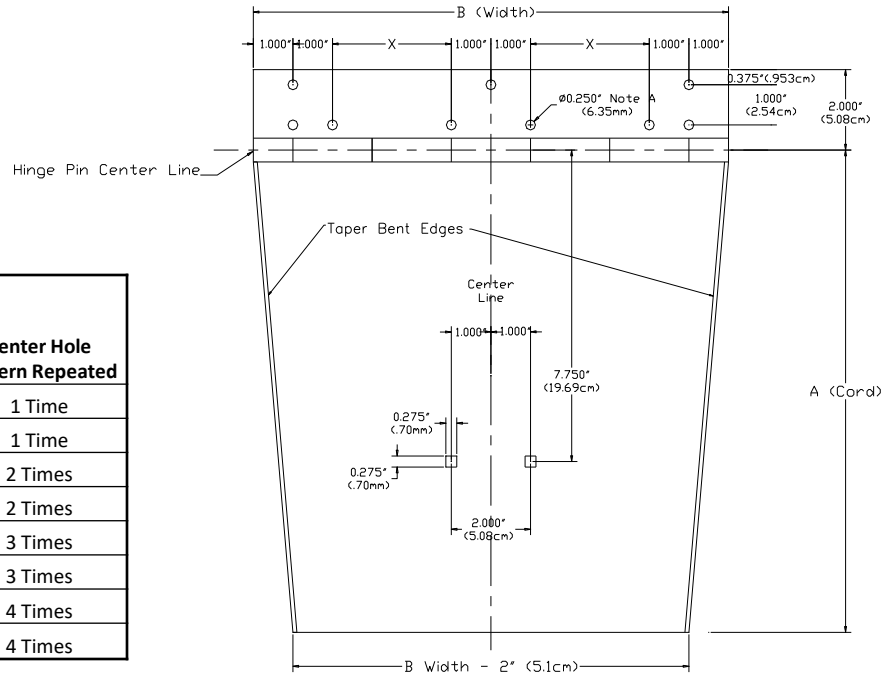
Lectrotab specializes in providing customized tab designs. Please contact Lectrotab for your specific tab needs.

FEATURES

- 90° Taper bent edges for additional strength
- Strong, corrosion resistant 12 gauge, 304 stainless steel
- Continuous rolled and pinned hinge provides added strength and eliminates the need for welding
- Standard chord lengths available in 9" (23cm) and 12" (30cm) and widths from 9" (23cm) to 48" (122cm)
- Custom chord lengths and widths are also available
- Dual actuator mounting available (see dual actuator tab spec sheet)
- Black powder coated finish available
- Zinc anodes may be installed for additional galvanic corrosion resistance
- Bent trailing edge standard for tabs exceeding 24" width
- Includes carriage bolts and nuts for actuator mounting to tab

STAINLESS STEEL TAB DIMENSIONS

Tab Width "B"	Dimension "X"	Center Hole Pattern Repeated
9"/23cm	1.5"/38.1mm	1 Time
12"/30cm	3"/76.2mm	1 Time
18"/46cm	3.33"/84.5mm	2 Times
24"/61cm	5.33"/135.4mm	2 Times
30"/76cm	5"/127mm	3 Times
36"/91cm	6.5"/165.1mm	3 Times
42"/107cm	6"/152.4mm	4 Times
48"/122cm	7"/177.8mm	4 Times



HEAVY DUTY STAINLESS STEEL TAB MODEL IDENTIFICATION

T 12 X 12 - 9008

T = Stainless Steel
12 gauge

1st Number (A) =
Tab Chord
Length (inches)

2nd Number (B) =
Tab Width Across
Transom (inches)

9008 = 90° Taper Bent Side Edges
9017 = 90° Taper Bent Side Edges
w/ Black Powder Coating

SPECIFICATIONS

Model Number	Stainless Steel Gauge	Tab Size		Typical Boat Length	
		Inches	cm	Feet	Meters
T9X9-9008	12	9x9	23x23	14'-19'	4.0m-6.0m
T9X12-9008	12	9x12	23x30	16'-25'	5.0m-7.5m
T9x18-9008	12	9x18	23x46	21'-30'	6.5m-9.0m
T9x24-9008	12	9x24	23x61	24'-37'	7.0m-11.0m
T9x30-9008	12	9x30	23x76	30'-45'	9.0m-13.5m
T9x36-9008	12	9x36	23x91	35'-54'	10.5m-16.5m
T12x9-9008	12	12x9	30x23	18'-29'	5.5m-8.5m
T12x12-9008	12	12x12	30x30	18'-32'	5.5m-9.5m
T12x18-9008	12	12x18	30x46	20'-40'	6.0m-12.0m
T12x24-9008	12	12x24	30x61	28'-48'	8.5m-14.5m
T12x30-9008	12	12x30	30x76	30'-55'	9.0m-16.5m
T12x36-9008	12	12x36	30x91	34'-60'	10.0m-18.0m
T12x42-9008	12	12x42	30x107	50'-70'	15.0m-21.0m
T12x48-9008	12	12x48	30x122	60' +	18.0m +